

Martin Lippert

# BOF: SPRING TOOLING - WHAT'S NEW AND WHAT'S COMING

mlippert@vmware.com  
@martinlippert



**33rd Degree Conference**  
Conference for Java Masters

**13-15 March 2013**  
**Warsaw, Poland**

# About me



## Martin Lippert

Staff Engineer, R&D, at SpringSource/  
VMware and lead of Spring Tool Suite  
development

## Working areas

- Eclipse Tooling for the Spring platform
- Open Source Committer
- Aspect-Weaving for OSGi
- Cloud IDEs and JavaScript
- Agile software development

# Overview

- The open-sourced Spring Tool Suite
  - New structure, new projects, new distributions
- New features
  - New and noteworthy
- Release schedules
  - What is next?
  - Outlook
- Discussion

# Modularized projects

- Re-modularized SpringSource Tool Suite:
  - Spring tooling (Spring IDE)
  - Grails tooling (Grails IDE)
  - vFabric tc Server Integration for Eclipse
  - Gradle Integration for Eclipse
  - Cloud Foundry Integration for Eclipse
- Smaller components, smaller projects, installable and usable individually

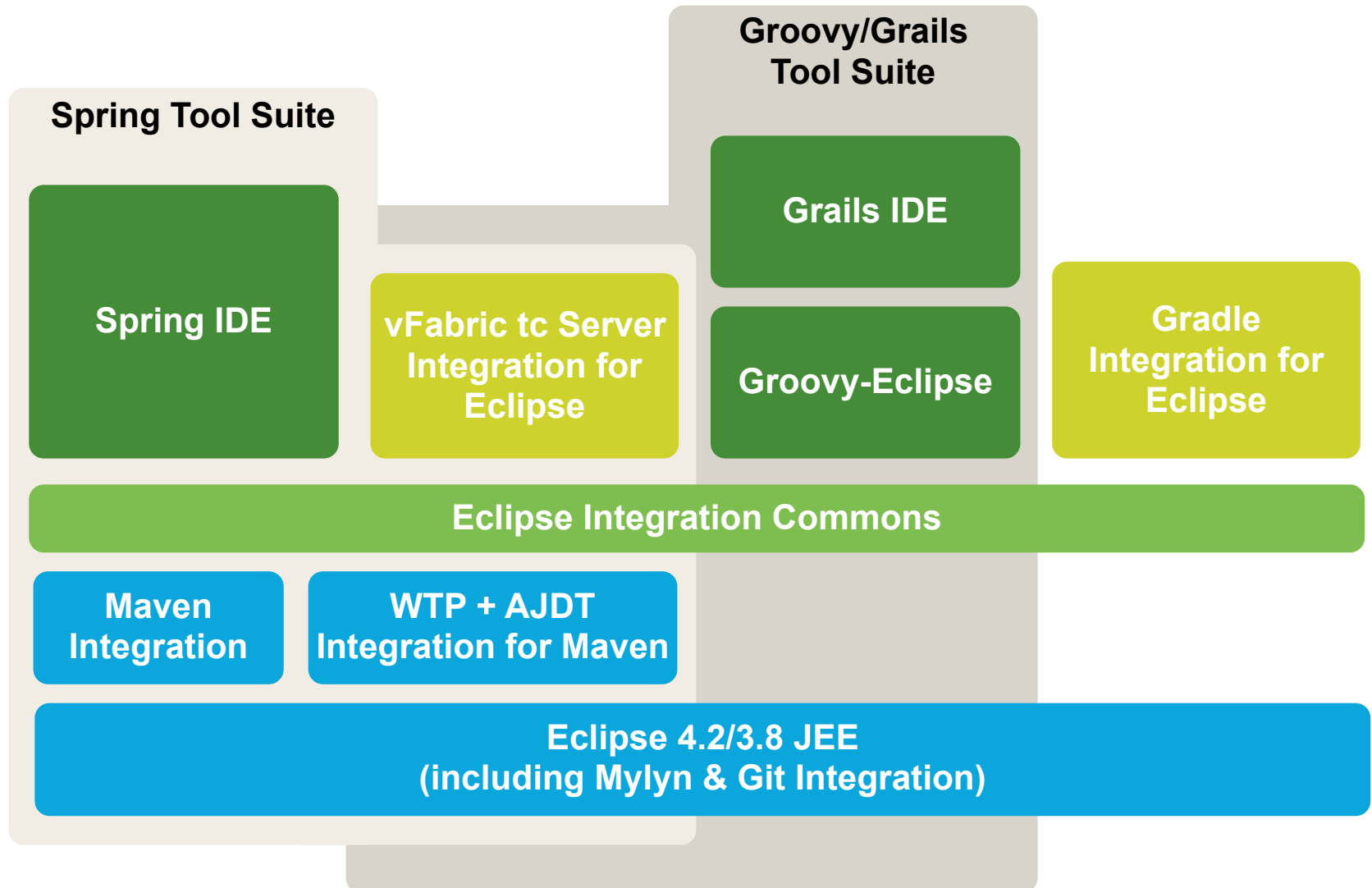
# Open Source

- All those projects are Open Source now:
  - EPL license
  - Hosted at GitHub: <http://github.com/SpringSource>
- Fully open and transparent now
- Contributions welcome 😊

# Distributions

- We now ship two distributions with each release:
  - **Spring Tool Suite (STS):**  
<http://www.springsource.org/sts>
  - **Groovy/Grails Tool Suite (GGTS):**  
<http://grails.org/products/ggts>
- A ready to use combination of:
  - Eclipse JEE
  - Newly open-sourced projects

# Summarizing



# Which Eclipse distro?

- STS/GGTS 3.2.0 distributions ship on:
  - Eclipse Juno 4.2 SR2
  - Eclipse Juno 3.8 SR2
- Update site available for:
  - Eclipse Kepler 4.3
  - Eclipse Juno 3.8 + 4.2
  - Eclipse Indigo 3.7



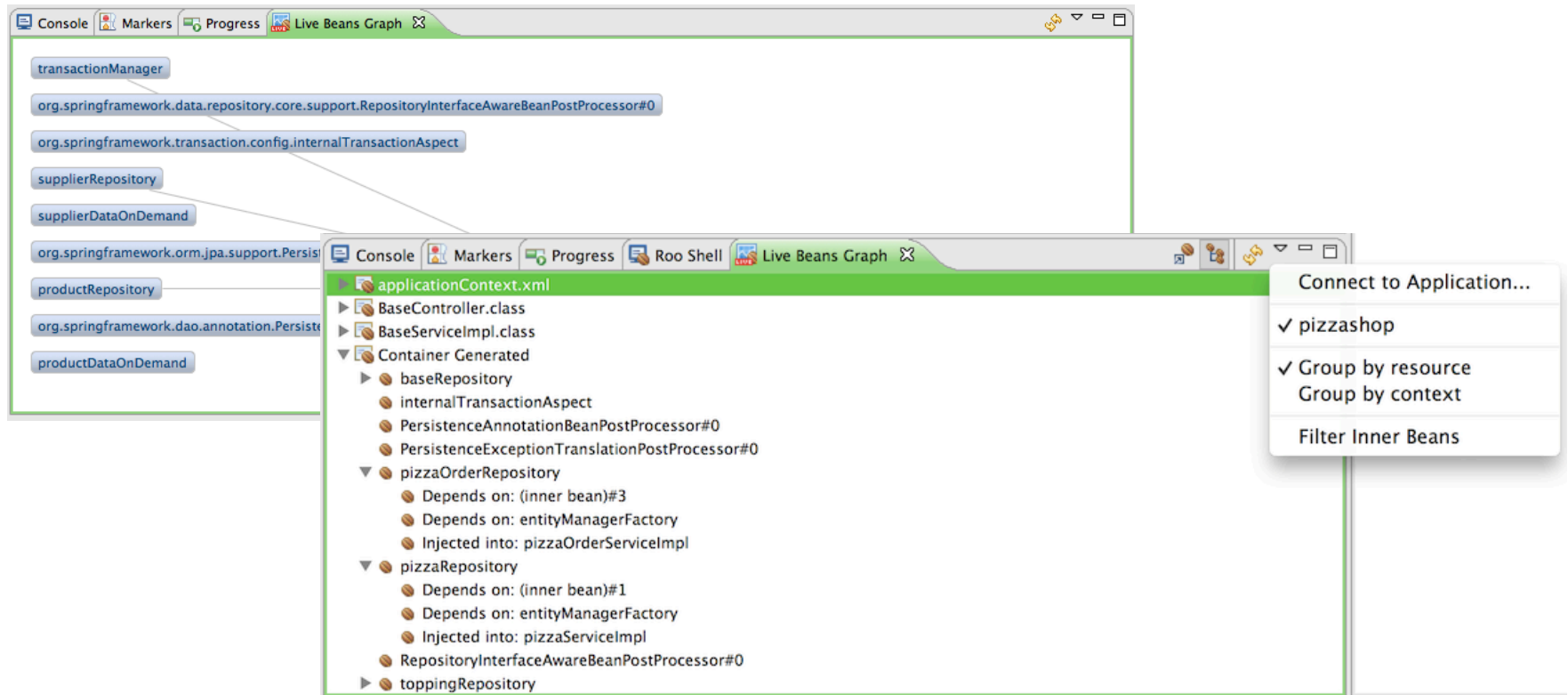
# Spring Tool Suite



- Eclipse JEE
- Spring IDE
- vFabric tc Server Integration for Eclipse
- Maven Integration for Eclipse
- Git Integration for Eclipse

# New and Noteworthy

- Live Beans Graph
  - First time you can see into your running application



# New and Noteworthy

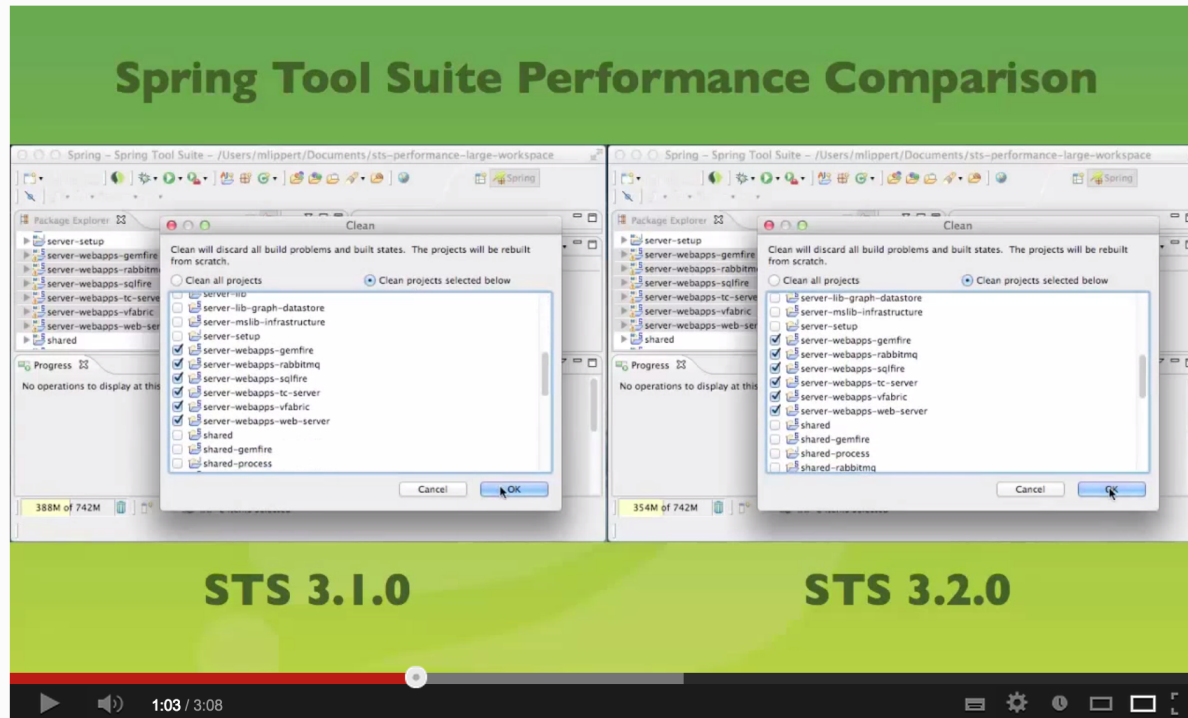
- Support for Spring Data
  - Project explorer, validation, content-assist

```
/**
 * Repository interface for {@link User} instances. Provides basic CRUD operations due to the extension of
 * {@link JpaRepository}. Includes custom implemented functionality by extending {@link UserRepositoryCustom}.
 */
public interface UserRepository extends CrudRepository<User, Long>, UserRepositoryCustom {

    find
    findById(Serializable id) : List<User>
    findByFirstname(String firstname) : List<User>
    findByLastname(String lastname) : List<User>
    findByUsername(String username) : List<User>
}
```

# New and Noteworthy

- Improved Performance



- A lot of small improvements all over the place

# Schedule

- Releases shortly after every Eclipse release
  - 3.2.0: March 2013 (after Eclipse Juno SR2)
  - 3.3.0: July 2013 (after Eclipse Kepler)
  - 3.4.0: October 2013 (after Kepler SR1)
- Continuous Delivery in between
  - 2-3 milestones between releases
  - Going public roughly every 6 weeks
  - Nightly builds always available

# Contributing

- Open Source
  - Instructions on each project page covering:
    - How to set up a development environment
    - How to run the tests
    - The contribution process (Jira, CLA, pull request)
- Or contribute by just joining the forum discussions, or creating and voting on jiras

# What's next?

- STS/GGTS 3.3.0:
  - M1: Late April 2013
  - M2: Early June 2013
  - Release: July 2013 (after Eclipse Kepler GA)

# What's next?

- Spring
  - Support for Spring 4
  - Improved annotation-based config support
  - Improved performance and memory footprint
  - Improved Cloud support (for Cloud Foundry)



# Q&A

- All questions are welcome!!!
- My questions are:
  - What would you like to see in the tooling?
  - What features do you miss?
  - What are your biggest pain points?

# Thank You

Enjoy the just released  
**Spring Tool Suite 3.2.0**

Martin Lippert

mlippert@vmware.com, @martinlippert